

# CPVC ASTM



**TIGRE** 

## CPVC ASTM

### CPVC Pipe Astm 3M



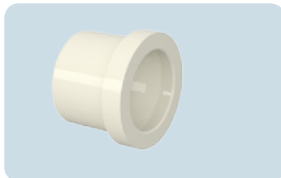
Code	Size	Pack of
17001027	1/2	20
17001043	3/4	20
17001060	1	20
17001370	1.1/4	5
17001388	1.1/2	5
17001396	2	5

### CPVC Cap ASTM



Code	Size	Pack of
22870505	1/2	20
22870556	3/4	20
22870602	1	10
22870440	1.1/4	10
22870459	1.1/2	10
22870466	2	10
22870474	2.1/2	2
22870482	3	2
22870490	4	2

### CPVC Reduction Bushing ASTM



Code	Size	Pack of
22870203	1x1/2	20
22870211	1.1/4 X 1/2	10
22870220	1.1/4 X 3/4	10
22870238	1.1/2 X 3/4	10
22870246	1.1/2 X 1	10
22870254	2 X 1	5
22870262	2.1/2 X 3/4	2
22870270	2.1/2 X 1.1/4	5
22870289	3 X 2	2
22870300	3/4 X 1/2	20
22870351	1 X 3/4	20
22870360	1.1/4 X 1	10
22870378	1.1/2 X 1.1/4	10
22870386	2 X 1.1/4	2
22870394	2 X 1.1/2	10
22870408	2.1/2 X 2	5
22870416	3 X 2.1/2	2
22870424	4 X 2.1/2	2
22870432	4 X 3	2

### CPVC Male Adapter ASTM



Code	Size	Pack of
22870610	1/2	10
22870637	3/4"	10
22870653	1"	10
22870629	3/4 X 1/2'	10
22870512	1.1/4	10
22870539	1.1/2	1
22870571	2	1
22870599	4	1

### 45° CPVC Elbow ASTM



Code	Size	Pack of
22870700	1/2	20
22870750	3/4	20
22870807	1	10
22870814	1.1/4	10
22870822	1.1/2	10
22870831	2	5
22870840	2.1/2	2
22870858	3	2
22870866	4	2

### CPVC Transition Union ASTM



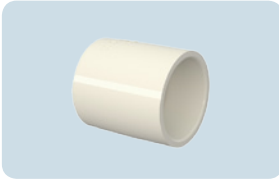
Code	Size	Pack of
22874837	3/4	10

### CPVC Mixing Tee ASTM



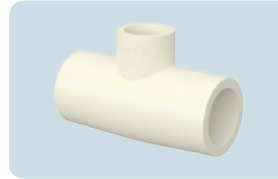
Code	Size	Pack of
22875019	1/2	10
22875027	3/4	10

**CPVC Socket ASTM**



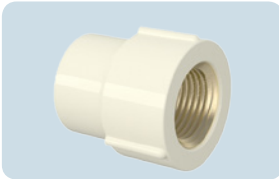
Code	Size	Pack of
22871404	1/2	40
22871455	3/4	40
22871501	1	10
22871510	1.1/4	10
22871528	1.1/2	10
22871536	2	10
22871544	2.1/2	5
22871552	3	2
22871560	4	2

**CPVC Reduction Tee ASTM**



Code	Size	Pack of
22872206	1.1/4 X 1	10
22872222	1.1/2 X 1	5
22872249	2X1	5

**CPVC Female Adapter ASTM**



Code	Size	Pack of
22871609	1/2	20
22871650	3/4	20
22871676	3/4 X 1/2	20
22871706	1	10
22871722	1.1/4	2
22871730	1.1/2	2
22871749	2	1

**CPVC Valve ASTM**



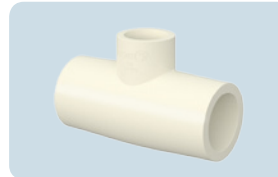
Code	Size	Pack of
22875108	1/2	10
22875116	3/4	10

**CPVC Transition Tee ASTM**



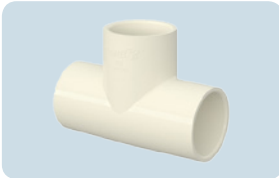
Code	Size	Pack of
22871781	1/2	20
22871811	3/4 X 1/2	20
22871838	3/4	20

**CPVC Reduction Tee ASTM**



Code	Size	Pack of
22874527	3/4 x 1/2	20
22874543	1 x 1/2	20
22874551	1 x 3/4	20
22874578	1.1/4 x 3/4	10
22874616	1.1/2 x 3/4	10
22874624	1.1/2 x 1.1/4	10
22874640	2 x 3/4	5
22874675	2.1/2 x 2	2

**CPVC Tee ASTM**



Code	Size	Pack of
22871900	1/2	40
22871951	3/4	40
22871960	1.1/4	10
22871977	1.1/2	5
22871985	2	5
22871993	2.1/2	5
22872001	1	10
22872019	3	2
22872027	4	2

**CPVC Union ASTM**



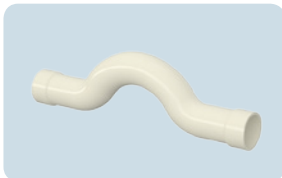
Code	Size	Pack of
22872400	1/2	10
22872451	3/4	10
22872508	1	10
22872515	1.1/4	2
22872523	1.1/2	5
22872532	2	2
22872540	2.1/2	2
22872559	3	2

**90° Bend CPVC ASTM**

Code	Size	Pack of
22872702	1/2	10
22872729	3/4	10
22872745	1	10

**90° CPVC Elbow ASTM**

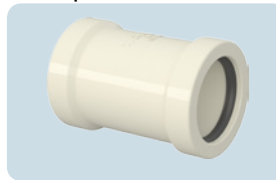
Code	Size	Pack of
22870904	1/2	40
22870955	3/4	40
22871005	1	10
22871013	1.1/4	10
22871021	1.1/2	10
22871030	2	5
22871048	2.1/2	5
22871056	3	2
22871064	4	2

**CPVC Transposition Bend ASTM**

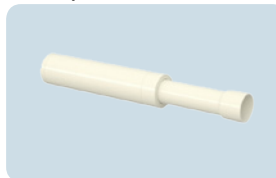
Code	Size	Pack of
22872850	1/2	10
22872877	3/4	10

**CPVC Transition Elbow ASTM**

Code	Size	Pack of
22871188	1/2	10
22871200	3/4 X 1/2	20
22871226	3/4	20
22871250	1	10

**CPVC Repair Socket ASTM**

Code	Size	Pack of
22871315	1/2	10
22871331	3/4	10
22871358	1	10
22871374	1.1/4	5
22871382	1.1/2	5

**CPVC Expancion Joint ASTM**

Code	Size	Pack of
22873717	1	4
22873733	1.1/4	4
22873750	1.1/2	2
22873776	2	2



**TIGRE S/A** - Tubos e Conexões  
Rua Xavantes, 54 Atiradores  
89203-900 - Joinville - SC - Brazil

**tigre.com**

Contact: [export@tigre.com](mailto:export@tigre.com)  
**+55 47 3441 5487**